

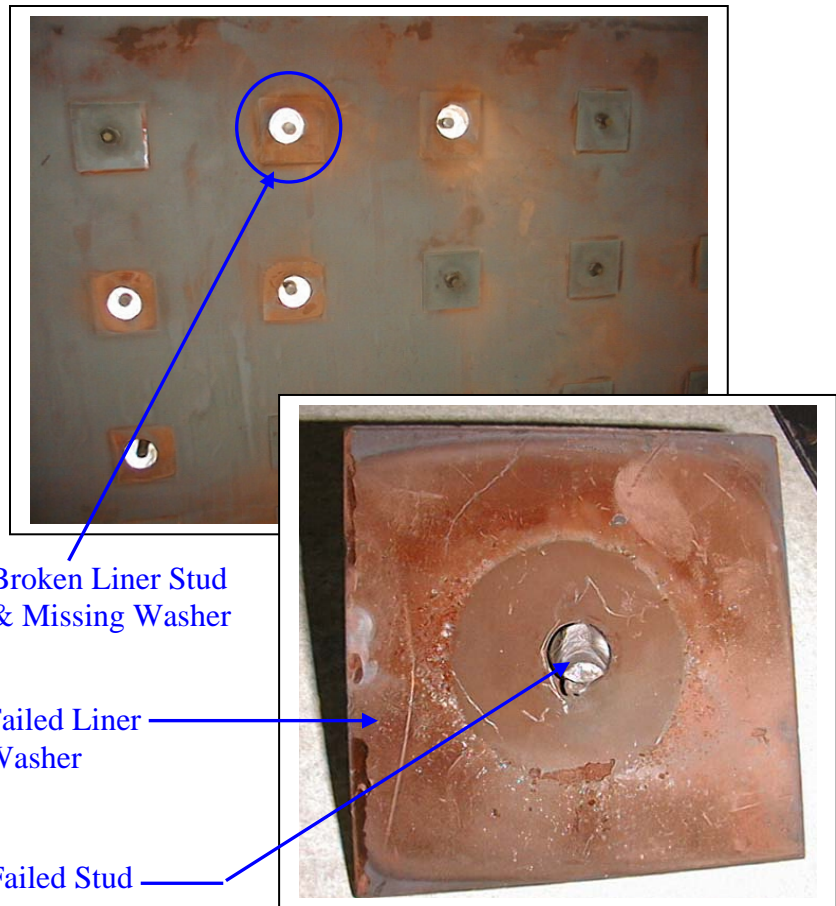
High Strength Liner Studs for Gas Turbine HRSGs

New! High Strength Liner Stud For Severe Service

HRST has seen a number of liner stud failures in inlet ducts, near the gas turbine connection. With some liner systems, turbulence in the exhaust causes liner plates to vibrate and studs fail at the “shoulder” where the diameter reduces. This problem occurs most frequently with LM6000 and W501FD2 gas turbine models, due to particularly turbulent exhaust.

We have designed a replacement stud specifically for this problem. Careful analysis of the failure mechanism is first recommended to verify the root cause of the problem.

Please contact HRST for technical assistance and replacement studs.



Broken Studs in an HRSG Inlet Duct



**You don't have to live
with HRSG liner problems!**